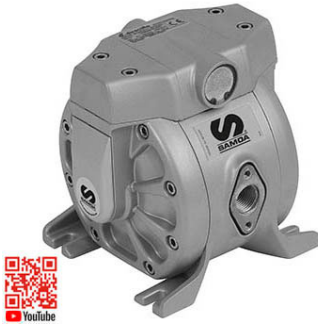


**DF50AASNS  
NNBAS**

**1/2" PNEUMATIC DOUBLE DIAPHRAGM PUMP, DF50,  
DIRECTFLO SERIES, ALUMINIUM-BUNA-N-BUNA-N (FLOW)**



Air operated double diaphragm pumps for dosing, spraying, transferring, evacuating and distributing a wide variety of fluids. Ideal for standard applications with small to medium flow rates. Very robust metal pumps designed for the toughest applications. This model is a fully groundable ATEX certified pump, for use in potentially explosive atmospheres (Ex II2 GD IIB/IIC 95 °C).

VIDEO Youtube: [https://youtu.be/b\\_O8J029PxY](https://youtu.be/b_O8J029PxY)

**DATOS TÉCNICOS**

<b>Air inlet</b>	3/8" NPSM (F)
<b>Air pressure operating range</b>	1.5 - 8 bar (20 - 120 psi)
<b>Certification</b>	ATEX
<b>Delivery per cycle</b>	0.2 l (0.05 gal)
<b>Fluid inlet</b>	1/2" NPSM (F)
<b>Fluid outlet</b>	1/2" NPSM (F)
<b>Fluids</b>	Waste oil, Diesel, Aceite, Coolant
<b>Maximum dry suction head</b>	6 m (20 ft)
<b>Maximum free flow delivery</b>	50 l/min (14 gal/min)
<b>Maximum wet suction head</b>	8 m (26 ft)
<b>Pressure ratio</b>	1:1
<b>Pump size</b>	1/2"
<b>Solids in suspension maximum size</b>	3 mm (0.12 ")
<b>Weight</b>	3.5 kg (7.72 lb)
<b>Wetted materials</b>	Stainless steel (AISI 316), Stainless steel, NBR, Aluminium

**DOCUMENTACIÓN**

**NOMBRE**

**DESCRIPCIÓN**

855837.pdf

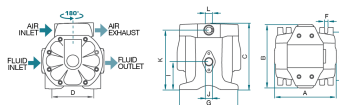
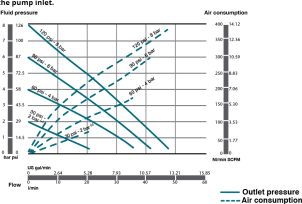
Instructions manual 1

855816.pdf

Instructions manual 2

**+ INFO**

Tested at room temperature, with water and flooded pump with 800 mm (31.5 inches) height of water above the pump inlet.



mm											
A	B	C	D	E	F*	G	I	J	K	L	
156	160	185	105	122	8	146	70	112 (F)	150	3/8 (F)	
in											
A	B	C	D	E	F*	G	I	J	K	L	
6.164	6.300	7.315	4.134	4.803	0.315	5.748	2.756	4.411 (F)	5.906	1.500 (F)	

**CUADRO DE MODELOS**
**DF50AASNSNBAS**

Weight	3.5 kg (7.72 lb)
Maximum free flow delivery	50 l/min (14 gal/min)
Fluid inlet	1/2" NPSM (F)
Diaphragms	NBR
Balls	NBR
Seats	Stainless steel (AISI 316)
Other wetted materials	Stainless steel
Air motor	Aluminium
Fluid Path	Aluminium

**DF50AASESTMBAS**

Weight	3.5 kg (7.72 lb)
Maximum free flow delivery	50 l/min (14 gal/min)
Fluid inlet	1/2" NPSM (F)
Diaphragms	Santoprene
Balls	PTFE
Seats	Stainless steel (AISI 316)
Other wetted materials	Stainless steel
Air motor	Aluminium
Fluid Path	Aluminium

**DF50AASVSTHBAS**

Weight	3.5 kg (7.72 lb)
Maximum free flow delivery	50 l/min (14 gal/min)
Fluid inlet	1/2" NPSM (F)
Diaphragms	Hytrel
Balls	PTFE
Seats	Stainless steel (AISI 316)
Other wetted materials	Stainless steel
Air motor	Aluminium
Fluid Path	Aluminium

**DF50AASTSTBAS**

Weight	3.5 kg (7.72 lb)
Maximum free flow delivery	50 l/min (14 gal/min)
Fluid inlet	1/2" NPSM (F)
Diaphragms	PTFE
Balls	Stainless steel (AISI 316)
Seats	Stainless steel (AISI 316)
Other wetted materials	Stainless steel
Air motor	Aluminium
Fluid Path	Aluminium

**DF50ASSTSTBAS**

Weight	3.5 kg (7.72 lb)
Maximum free flow delivery	50 l/min (14 gal/min)
Fluid inlet	1/2" NPSM (F)
Diaphragms	PTFE
Balls	Stainless steel (AISI 316)
Seats	Stainless steel (AISI 316)
Other wetted materials	Stainless steel
Air motor	Aluminium
Fluid Path	Stainless steel (AISI 316)

**DF50AASTSTTBAS**

### DF50ASSTTTBAS

Weight	3.5 kg (7.72 lb)
Maximum free flow delivery	50 l/min (14 gal/min)
Fluid inlet	1/2" NPSM (F)
Diaphragms	PTFE
Balls	PTFE
Seats	Stainless steel (AISI 316)
Other wetted materials	Stainless steel
Air motor	Aluminium
Fluid Path	Stainless steel (AISI 316)

Weight	3.5 kg (7.72 lb)
Maximum free flow delivery	50 l/min (14 gal/min)
Fluid inlet	1/2" NPSM (F)
Diaphragms	PTFE
Balls	PTFE
Seats	Stainless steel (AISI 316)
Other wetted materials	Stainless steel
Air motor	Aluminium
Fluid Path	Aluminium