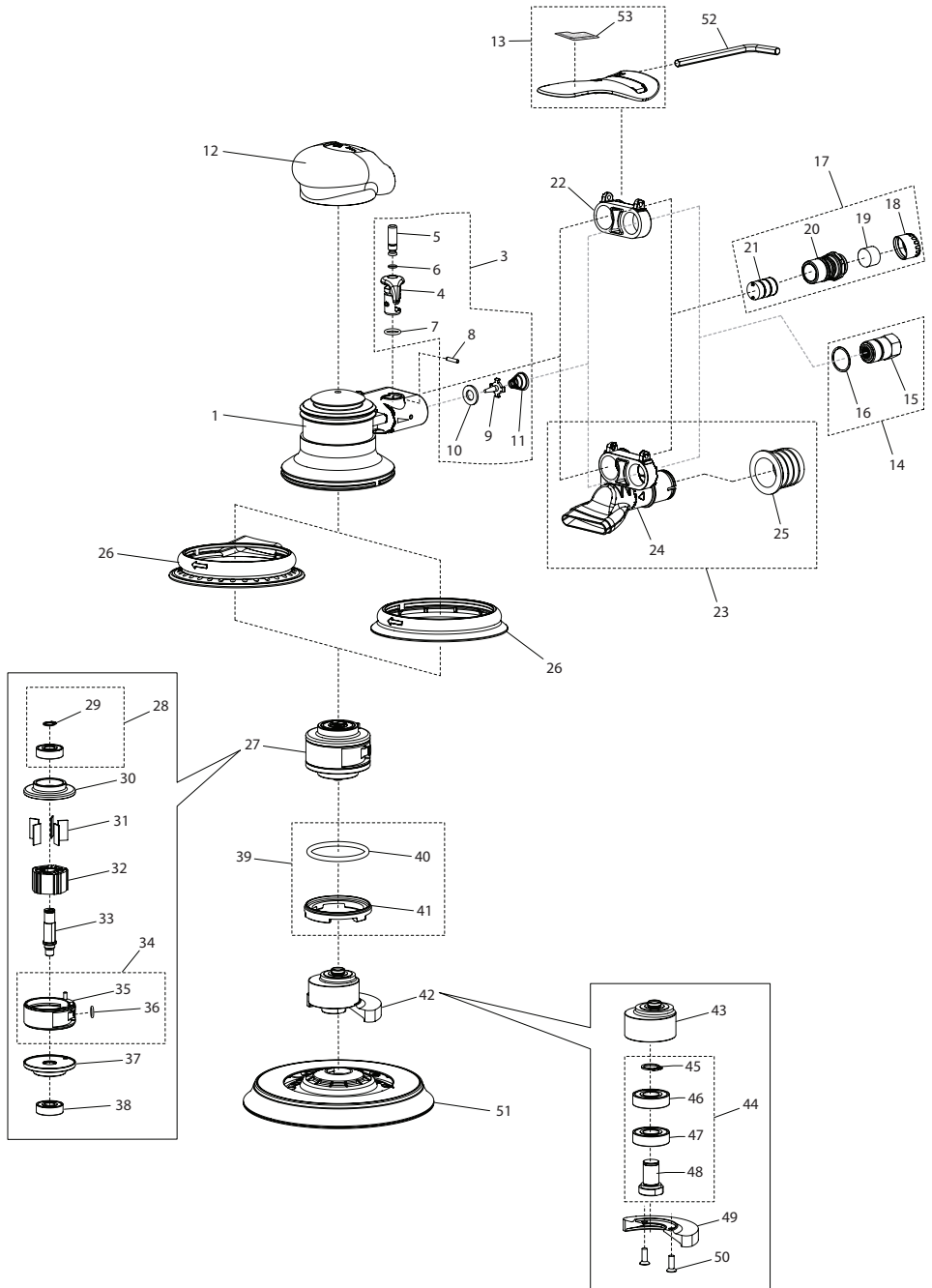


8000MAX Series Random Orbital Sander - Exploded View



(Dwg. 48622187)

8000MAX Series Random Orbital Sander - Parts List

Item	Part Description	Part Number	Item	Part Description	Part Number
1	Housing	8000MAX-360	26	Shroud	
*2	Model Label			for Models 8101MAX, 8102MAX, 8103MAX	8000MAX-371
	for Model 8101MAX	8101MAX-301		for Models 8201MAX, 8202MAX, 8203MAX	8000MAX-370
	for Model 8102MAX	8102MAX-301	27	Motor Assembly	8000MAX-A380
	for Model 8103MAX	8103MAX-301	28	Upper Motor Ball Bearing	8000MAX-24
	for Model 8201MAX	8201MAX-301	29	Retainer	---
	for Model 8202MAX	8202MAX-301	30	Upper End Plate	---
	for Model 8203MAX	8203MAX-301	31	Vane Pack (set of 5)	8000MAX-42-5
3	Throttle Regulator Assembly		32	Rotor	8000MAX-53
	for Models 8101MAX, 8102MAX, 8201MAX, 8202MAX (3/32" and 3/16" Orbit)	8000MAX-A335	33	Shaft	---
	for Models 8103MAX, 8203MAX (3/8" Orbit)	8000MAX-A340	34	Cylinder Assembly	---
4	Reverse Valve	---	35	Cylinder	---
5	Valve Stem / Plunger	---	36	O-Ring	---
6	O-Ring	---	37	Lower End Plate	---
7	O-Ring	---	38	Lower Motor Ball Bearing	8000MAX-25
8	Dowel Pin	---	39	Motor Cap Lock Ring Assembly	8000MAX-A390
9	Throttle Valve	---	40	Lock Ring	---
10	Valve Seat	---	41	O-Ring	---
11	Valve Spring	---	42	Counter Balance Assembly	---
12	Housing Grip	8000MAX-350	43	Counter Balance	
13	Lever with Warning Label	8000MAX-330		for Models 8101MAX, 8201MAX 3/32"	8000MAX-100-1
14	Inlet Assembly	8000MAX-A310		for Models 8102MAX, 8202MAX 3/16"	8000MAX-100-2
15	Inlet Bushing	---		for Models 8103MAX, 8203MAX 3/8"	8000MAX-100-3
16	O-Ring	---	44	Counter Balance Components	8000MAX-A400
17	Exhaust Silencer Assembly	8000MAX-A300	45	Retainer	---
18	Silencer	---	46	Upper Counter Balance Bearing	---
19	Silencer Element	---	47	Lower Counter Balance Bearing	---
20	Bushing	---	48	Counter Balance Spindle	---
21	Silencer Element (3)	---	49	Counter Balance Weight with 2 Screws	
22	Extension			for Models 8101MAX, 8201MAX 3/32"	8000MAX-200-1
	for Models 8101MAX, 8102MAX, 8103MAX	8000MAX-321		for Models 8102MAX, 8202MAX 3/16"	8000MAX-200-2
	for Models 8201MAX, 8202MAX, 8203MAX	NA		for Models 8103MAX, 8203MAX 3/8"	8000MAX-200-3
23	Vacuum Extension Assembly		50	Counter Balance Screw (2)	---
	for Models 8101MAX, 8102MAX, 8103MAX	NA	51	Backing Pad	
	for Models 8201MAX, 8202MAX, 8203MAX	8000MAX-A320		6" PSA Backing Pad with M8 Mounting Screw	8000MAX-700
24	Vacuum Extension	---		6" Hook and Loop Backing Pad with M8 Mounting Screw	8000MAX-750
25	Adaptor	---	52	Backing Pad Screw Wrench - Short	8000MAX-500
			53	Warning Label	8000MAX-99

* Not Illustrated.

Parts and Maintenance

When the life of the tool has expired, it is recommended that the tool be disassembled, degreased and parts be separated by material so that they can be recycled.

Tool repair and maintenance should only be carried out by an authorized Service Center.

Refer all communications to the nearest **Ingersoll Rand** Office or Distributor.

Related Documentation

For additional information refer to:

Product Safety Information Manual 04580387.

Product Information Manual 48622179.

Manuals can be downloaded from www.ingersollrandproducts.com.

